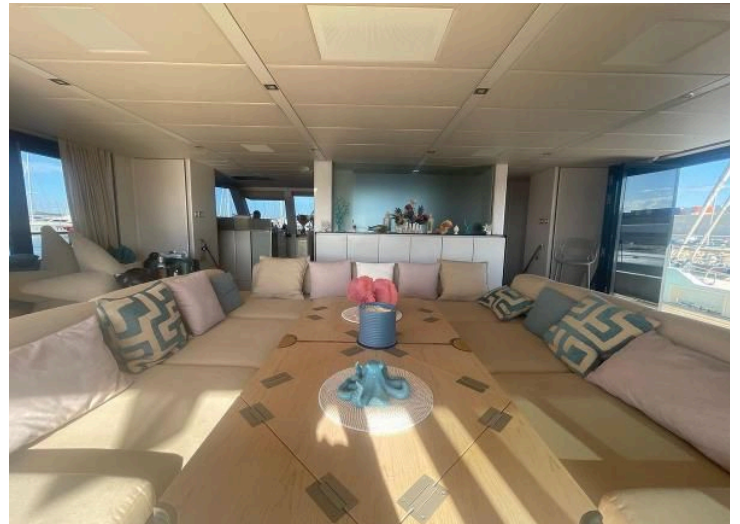


20.4 m 2017 Sunreef Supreme 68, Rosa del Mar
€2,900,000 Tax: Paid, Spain
Valencia, Spain



Boat Details					
Make:	Sunreef	Class:	Power Catamaran	Guest Cabins:	5
Model:	Supreme 68	Hull Material:	Composite	Crew Cabins:	3
Year:	2017	Drive Type:	Shaft Drive	Guest Heads:	5
Length:	20 m 45 cm	Beam:	10 m 50 cm	Crew Heads:	3
Price:	€2,900,000	Boat Location:	Valencia, Spain	Fuel Type:	Diesel
Condition:	Used	Name:	Rosa del Mar		

Description

Rosa del Mar is a variant of the Supreme 68 line from Sunreef Yachts that stands out for its innovative technical solutions and livability. With a length of 21 m, it offers a living space worthy of a superyacht, namely, 300 m2. Like its sailing counterpart, the Supreme 68 Power has an architecture and superstructure design that allows it to keep the salon, the owner's cabin, and the exterior deck on the same level.

The salon framed by a 360° window opens towards the cockpit and the walkways. This creates a large indoor/outdoor space when the sails are folded to each side of the yacht. The yacht's 65 m2 nacelle houses a large owner's cabin with access to the front terrace and its spa. At the rear, a huge garage can store a large tender and many water toys. In the lowered position, the door creates a platform over the water, for enjoying the sea or indulging in water sports. A technical space that is quite surprising for a boat under 70 feet.

The interior provides an elegant and unique layout.

On the flybridge, covered with a bimini that houses the cockpit, there is a bar, a dining area, and sunbathing zones.

The Supreme 68 Power is equipped with 2 x 500HP engines for maximum performance and maneuverability. A joystick has been installed in the cockpit, as well as a Yacht Controller remote and rear cameras to facilitate docking. With a fuel capacity of 8500 L, Rosa del Mar has an enormous range, nearly 900NM, with very low consumption.

Information & Features

2017 John Deere 6135SFM85M2 (Engine 1)

Engine Type:	Inboard	Drive Type:	Shaft Drive	Propeller Material:	Bronze
Fuel Type:	Diesel	Power:	500 kW		
Engine Hours:	3600	Propeller Type:	5 Blade		

2017 John Deere 6135SFM85M2 (Engine 2)

Engine Type:	Inboard	Drive Type:	Shaft Drive	Propeller Material:	Bronze
Fuel Type:	Diesel	Power:	500 kW		
Engine Hours:	3600	Propeller Type:	5 Blade		

Dimensions

LOA:	20 m 45 cm
Beam:	10 m 50 cm

Seating

Seating Capacity:	14
Max Passengers:	12

Tanks

Fuel: **3 x 3,000 l**

Fresh Water: **2 x 500 l**

Accommodations

Guest Cabins: **5**

Crew Heads: **3**

Crew Cabins: **3**

Guest Heads: **5**

Other

Flag Of Registry: **Spain**

Additional Equipment

- Garage
- Jacuzzi
- Underwater Lights
- Water Toys

Electrical Equipment

- Generator
- Inverter
- Shore Power Inlet

Electronics

- | | | |
|--------------------|---------------------|---------|
| - AIS | - Navigation Center | - Wi-Fi |
| - Autopilot | - Plotter | |
| - Cockpit Speakers | - Radar | |
| - Compass | - Radar Detector | |
| - Depthsounder | - Radio | |
| - GPS | - TV Set | |
| - Log-Speedometer | - VHF | |

Inside Equipment

- | | | |
|-----------------------|---------------------|-------------------|
| - Air Conditioning | - Fresh Water Maker | - Stern Thruster |
| - Battery Charger | - Heating | - Washing Machine |
| - Bow Thruster | - Hot Water | |
| - Deep Freezer | - Microwave Oven | |
| - Dishwasher | - Oven | |
| - Electric Bilge Pump | - Refrigerator | |
| - Electric Head | - Sea Water Pump | |

Outside Equipment/Extras

- | | | |
|------------------------------|-------------------|----------|
| - Cockpit Cushions | - Lifteraft | - Tender |
| - Cockpit Shower | - Radar Reflector | |
| - Cockpit Table | - Solar Panel | |
| - Gangway | - Surf System | |
| - Hydraulic Bathing Platform | - Swimming Ladder | |
| - Hydraulic Gangway | - Teak Cockpit | |
| - Hydraulic Swim Step | - Teak Sidedecks | |

Disclaimer

The Company presents the information of this vessel in good faith