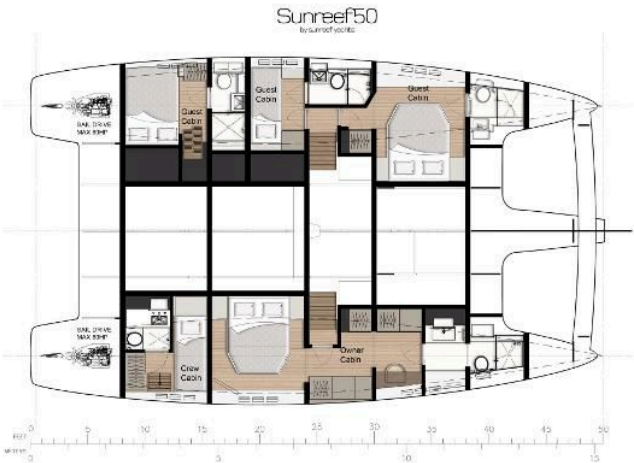
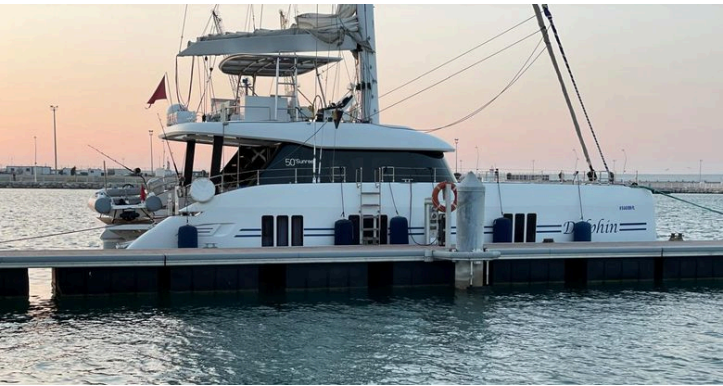


15.2 m 2019 Sunreef 50, DOLPHIN
€1,800,000 Tax: Not Paid
Sitges, Spain



Boat Details					
Make:	Sunreef	Class:	Catamaran	Crew Cabins:	1
Model:	50	Hull Material:	Composite	Guest Heads:	4
Year:	2019	Beam:	9 m 14 cm	Crew Heads:	1
Length:	15 m 24 cm	Boat Location:	Sitges, Spain		
Price:	€1,800,000	Name:	DOLPHIN		
Condition:	Used	Guest Cabins:	4		

Description

Sunreef 50A – Elegance and Performance at Sea

The **Sunreef 50A** is a luxury catamaran that blends innovative design, high-quality materials, and exceptional sailing performance. Featuring a **"Galley Up" layout**, this model offers a spacious owner's suite along with three guest cabins, ensuring unmatched comfort and privacy.

Design & Construction

The hull, deck, and flybridge are constructed using **E-glass fiberglass sandwich laminate**, utilizing an infusion process to ensure strength and lightness. The hull is also protected against osmosis with a **vinyl ester resin coating**.

The **hydraulic platform** with a **500 kg capacity** allows for easy water access, while the **forward terrace** provides an exclusive space to relax and enjoy the scenery.

Sails & Rigging

Equipped with a **carbon mast and boom**, the Sunreef 50A delivers optimal sailing performance. It includes:

- Fully battened Dacron mainsail with two reefs
- Dacron genoa with electric furling system
- Complete gennaker rigging with electric furler
- Lazy jack and lazy bag for easy sail handling

Engines & Autonomy

For efficient and reliable navigation, the Sunreef 50A is powered by **two Yanmar 80 HP engines** with folding propellers, along with:

- **Two 500 L fuel tanks**
- Bow thruster for enhanced maneuverability
- Water separator in fuel filter for engine protection

Electronics & Navigation

This catamaran is fully equipped with **B&G instrumentation**, including:

- Wind, speed, and temperature sensors
- Triton autopilot
- 3G radar
- VHF system with AIS
- Analog maneuvering camera
- 4G/LTE antenna for internet connectivity at sea

The helm station is located both on the **flybridge** and in the **salon**, providing full control from multiple areas on board.

Onboard Comfort & Amenities

Designed for a luxurious experience, the Sunreef 50A is outfitted with premium features, including:

- **42,000 BTU air conditioning system**

- **Bosch/Siemens kitchen appliances**, including an electric oven with microwave function, dishwasher, and 221 L fridge
- **Sonos Surround 5.1 sound system** with speakers in the cockpit and flybridge
- **40” LED TV in the salon and 32” TV in the owner’s suite**
- **Ice maker and beverage fridge on the flybridge**
- **Washing/drying machine**
- **LED lighting system throughout the interior and exterior**, including customizable underwater lights

Relaxation Spaces

- **Flybridge with a bar and cushioned seating area** to enjoy breathtaking views
- **High-quality cushions and sun pads** for maximum comfort
- **Spacious cockpit with direct sea access**

The Sunreef 50A is more than just a catamaran; it’s a statement of luxury, performance, and comfort in every journey. Perfect for both private sailing and high-end charters, this model guarantees an unmatched experience at sea.

Ready to set sail? Contact us for more details and discover everything the Sunreef 50A has to offer.

Information & Features

Yanmar (Engine 1)

Power: **80 hp**

Yanmar (Engine 2)

Power: **80 hp**

Dimensions

LOA: **15 m 24 cm**

Beam: **9 m 14 cm**

Min Draft: **2 m 13 cm**

Sail Areas

Total: **162 sqm**

Mainsail: **82 sqm**

Headsail: **80 sqm**

Speed

Cruising Speed: **9 kn**

Seating

Seating Capacity: **12**

Max Passengers: **12**

Tanks

Fuel: **2 x 500 l**

Fresh Water: **1 x 800 l**

Holding: **1 x 170 l**

Accommodations

Guest Cabins: **4**

Crew Heads: **1**

Crew Cabins: **1**

Guest Heads: **4**

Other

Flag Of Registry: **Morocco**

Electrical Equipment

- Generator
- Inverter
- Shore Power Inlet

Electronics

- | | | |
|--------------------|---------------------|----------------------------|
| - AIS | - Flat Screen TV | - Radio |
| - Autopilot | - GPS | - Repeater(s) |
| - CD Player | - Log-Speedometer | - VCR |
| - Cockpit Speakers | - Navigation Center | - VHF |
| - Compass | - Plotter | - Wi-Fi |
| - Computer | - Radar | - Wind Speed and Direction |
| - Depthsounder | - Radar Detector | |

Inside Equipment

- | | | |
|-----------------------|---------------------|-------------------|
| - Air Compressor | - Electric Head | - Refrigerator |
| - Air Conditioning | - Fresh Water Maker | - Sea Water Pump |
| - Battery Charger | - Heating | - Stern Thruster |
| - Bow Thruster | - Hot Water | - Washing Machine |
| - Deep Freezer | - Manual Bilge Pump | |
| - Dishwasher | - Microwave Oven | |
| - Electric Bilge Pump | - Oven | |

Outside Equipment/Extras

- | | |
|------------------------------|-------------------|
| - Cockpit Cushions | - Swimming Ladder |
| - Cockpit Shower | - Teak Cockpit |
| - Cockpit Table | - Tender |
| - Hydraulic Bathing Platform | |
| - Hydraulic Gangway | |
| - Outriggers | |
| - Radar Reflector | |

Rigging

- Electric Winch
- Steering Wheel
- Tiller

Sails

- Furling Genoa
- Gennaker/Cruising Spinnaker
- Genoa

Disclaimer

The Company presents the information of this vessel in good faith